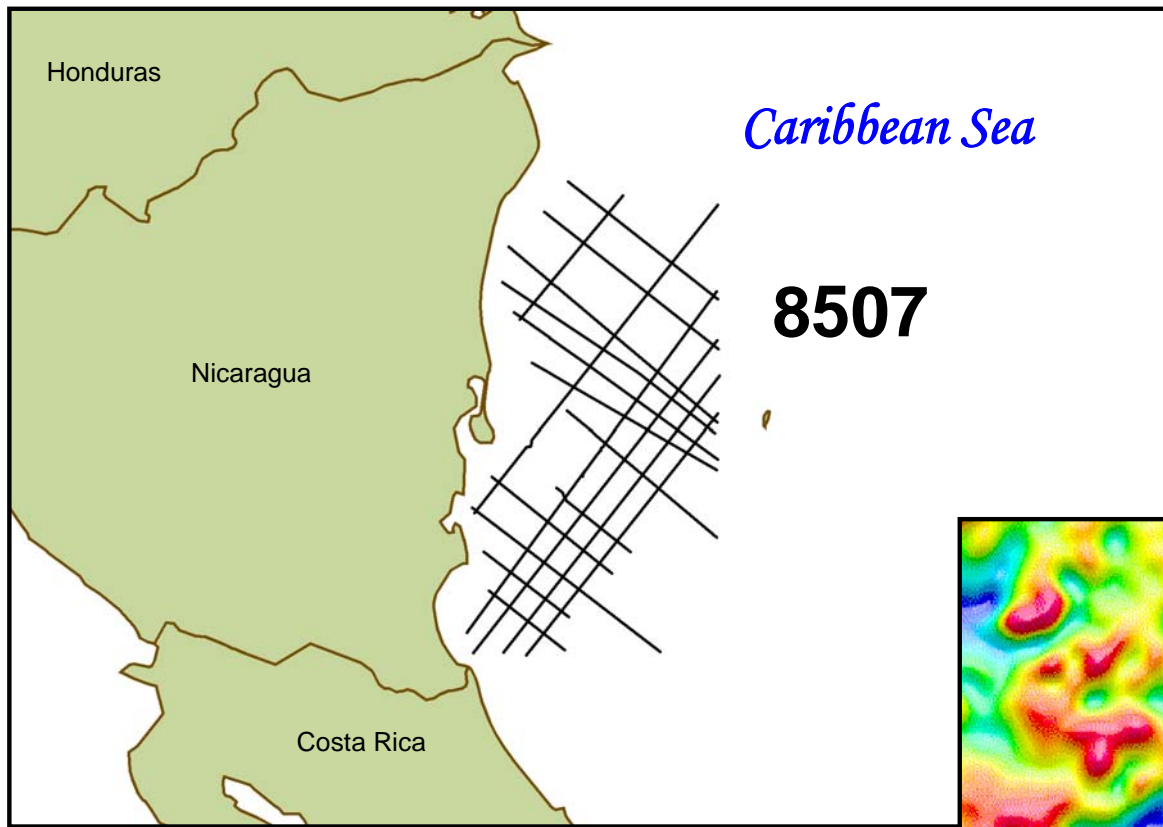
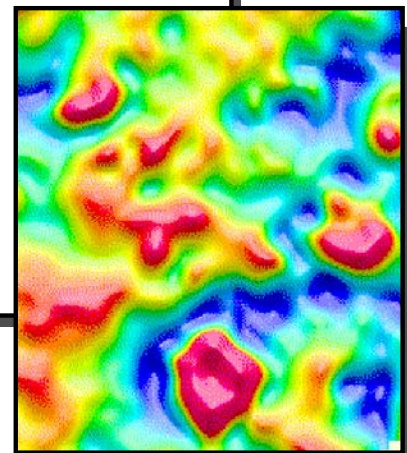


Nicaragua-Geoteam 2D

Seismic, Gravity and Magnetics



Nicaragua Caribbean Shelf Survey (NCS99)



Typical Bouguer residual anomaly from a modern 2D gravity survey (total field is 1.75 mGal, horizontal dimension is 20 km).

Project Description

FGMS in conjunction with Fugro Geoteam 2D seismic program, has conducted a seismic, gravity and magnetics survey offshore Nicaragua. The survey extends from inshore eastward to 82 degrees. The program provides 3,097 km. Of data and comprises twelve NW-SE trending dip lines at between 15 to 45 km. In length, (adjusted to tie 9 wells) and 6 NE-SW trending cross lines recorded at an average 20 km. Spacing. Ongoing, in-house interpretation of the dataset is being utilized to plan further acquisition in the coming year.

Pricing and Availability

Available for IMMEDIATE delivery.
Data review and interpretation costs available upon request

FUGRO GRAVITY & MAGNETIC SERVICES
6100 Hillcroft, Suite 115
Houston, TX 77081
Tel: (713) 369-6123

www.Fugro-GravMag.com • E- mail: fgmsdata@fugro.com