

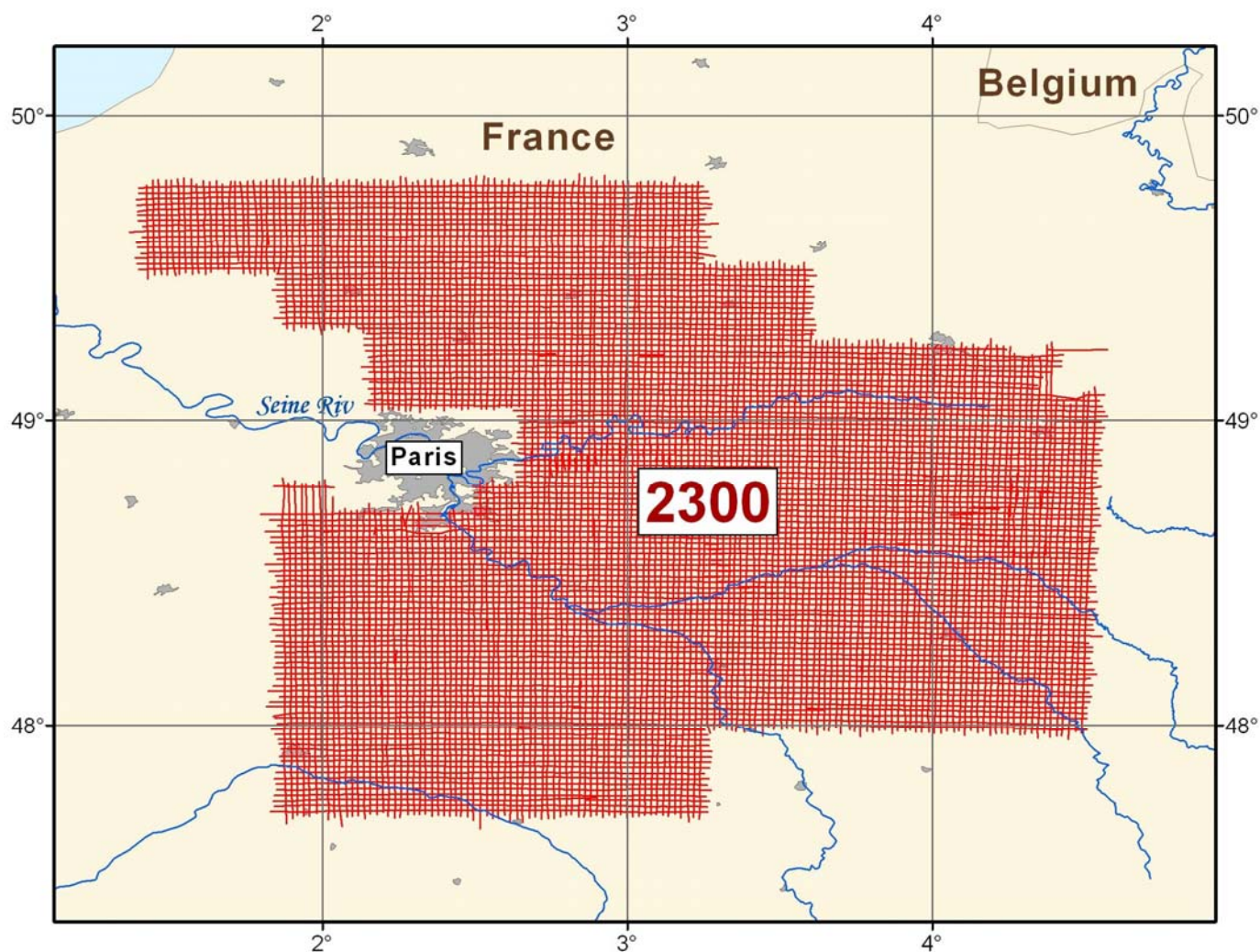
NON-EXCLUSIVE AIRBORNE SURVEYS

PARIS BASIN, FRANCE

2300

Type:	Aeromagnetic
Line Miles:	26,434
Line Kilometers:	42,540
Line/Tie-line Spacing:	1.5 x 2 km grid
Line/Tie-line Direction:	N-S/E-W
Altitude:	610 m

For more information on this survey or others, please visit www.fugro-gravmag.com



FUGRO GRAVITY & MAGNETIC SERVICES

6100 Hillcroft, Suite 115
Houston, Texas 77081

Phone : +1 713 369 6123
Email : fgmsdata@fugro.com

Visit us on the web at
www.fugro-gravmag.com