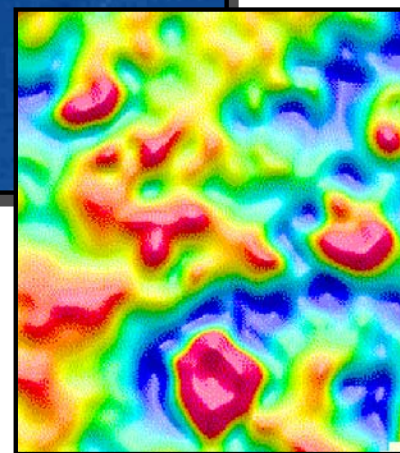
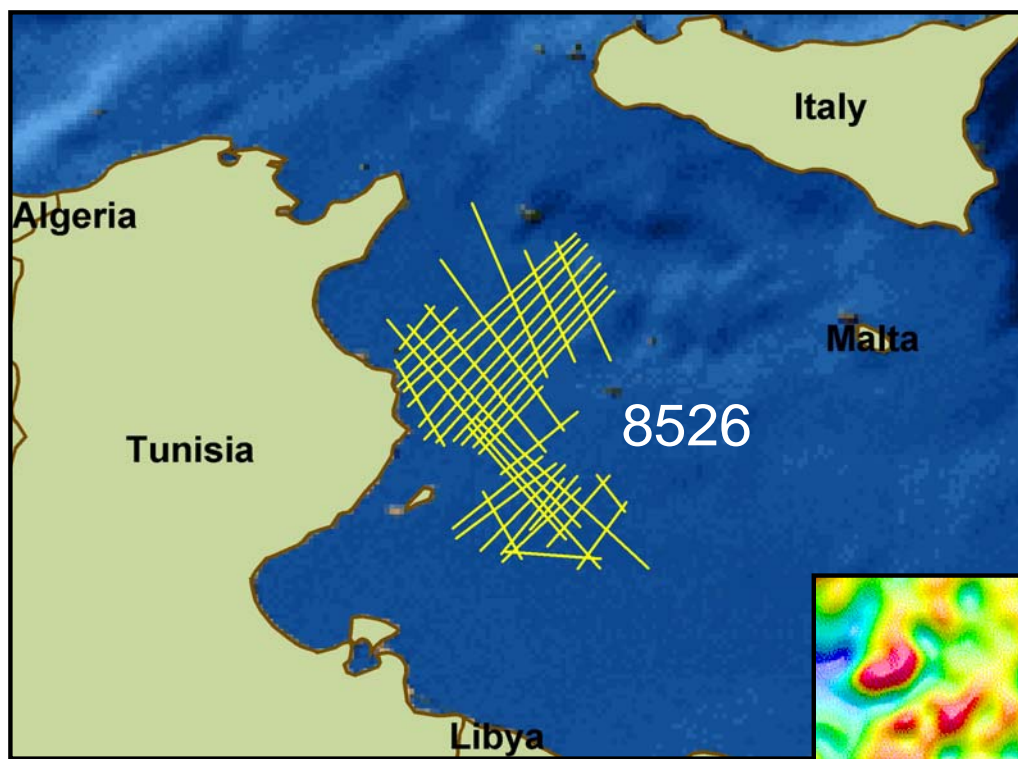


Pelagian Shelf PS-00

Non-Exclusive Gravity Data



FGMS has completed the acquisition and processing of 3873 km of marine gravity data over the Pelagian Shelf, offshore Tunisia. These data have been acquired in conjunction with a 2D seismic survey, PS-00, conducted by Fugro Geoteam.

The survey includes four open blocks, E2, E3, E4 and E5, located between the Gulf of Hammamet fields to the northeast and the Gulf of Gabes fields to the south. Used in conjunction with the seismic, the gravity data is invaluable in helping to define the structural trends. The gravity field is especially sensitive to the high density carbonates and 2D modeling will help to define the extent of these potential reservoirs.

Licensing of the gravity data is not linked to purchase of the seismic data.

Deliverable products for this survey are:

- Digital archive of raw and processed line data and grids
- Color shaded relief maps at 1:500,000 of
 - free air anomaly
 - Bouguer anomaly
 - residual Bouguer anomaly
 - bathymetry
 - processing report

For further information regarding this data package or advice and quotations for additional services, including merging of datasets, 2D and 3D modeling please contact us.

FUGRO GRAVITY & MAGNETIC SERVICES
6100 Hillcroft, Suite 115
Houston, TX 77081
Tel: (713) 369-6123

www.fugro-gravmag.com • Email: fgmsdata@fugro.com

Typical Bouguer residual anomaly from a modern 2D gravity survey (total field is 1.75 mGal, horizontal dimension is 20 km).