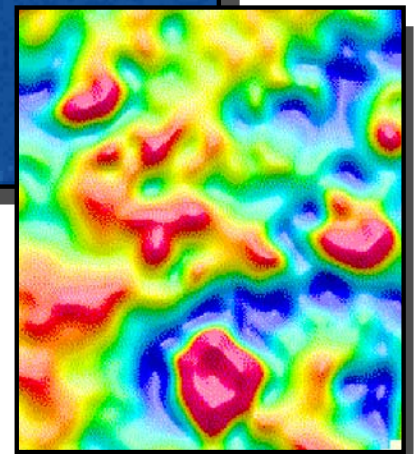
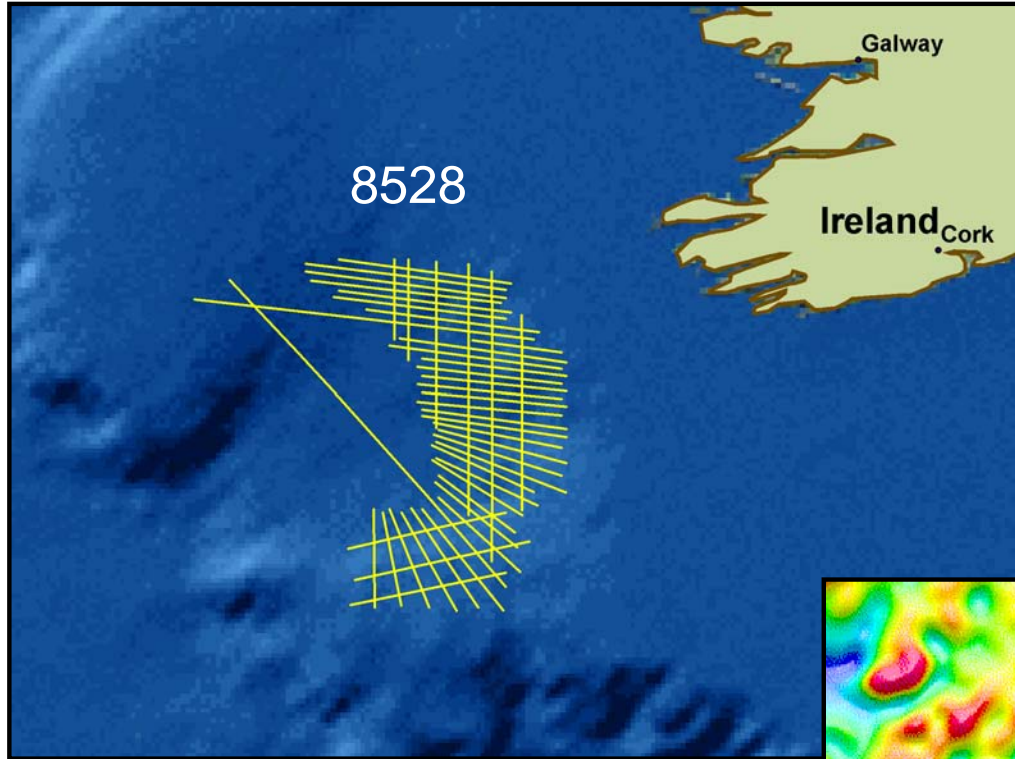


South Porcupine Basin

Non-Exclusive Gravity Data



FGMS has 4226 km of marine gravity data available for licensing over the South Porcupine Basin. These data have been acquired in conjunction with a 2D seismic survey conducted by Spectrum Energy and Information Technology Ltd.

The gravity data complement the seismic survey and aid interpretation in this frontier area. Acquired using the latest digital gravity system, these data provide a qualitative assessment of the structural trends. The data can also be used for detailed profile modeling to resolve ambiguities in the interpretation of these is seismic data.

Licensing of the gravity data is not linked to purchase of the seismic data.

Deliverable products for this survey are:

- Digital archive of raw and processed line data and grids
- Color shaded relief maps at 1:500,000 of:
 - free air anomaly
 - Bouguer anomaly
 - residual Bouguer anomaly
 - bathymetry
 - processing report

For further information regarding this data package or quotations for additional services, including merging of data sets, 2D and 3D modeling please contact us.

Typical Bouguer residual anomaly from a modern 2D gravity survey (total field is 1.75 mGal, horizontal dimension is 20 km).

FUGRO GRAVITY & MAGNETIC SERVICES
6100 Hillcroft, Suite 115
Houston, TX 77081
Tel: (713) 369-6123

www.fugro-gravmag.com • E-mail: fgmsdata@fugro.com