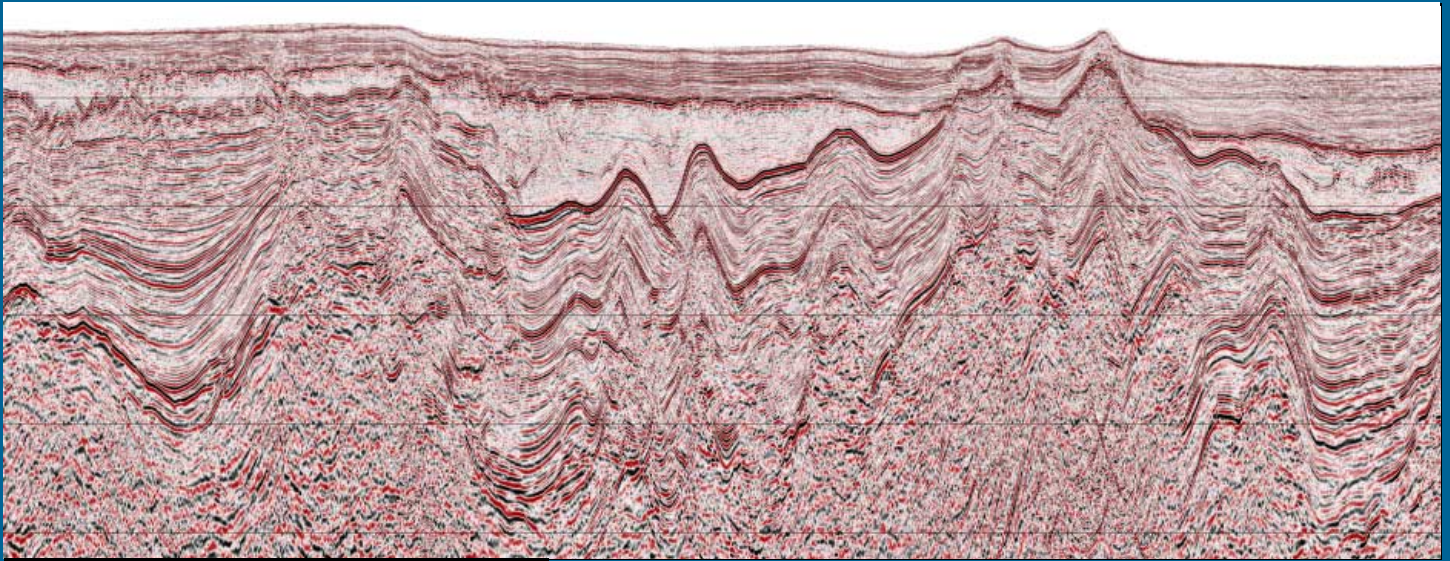
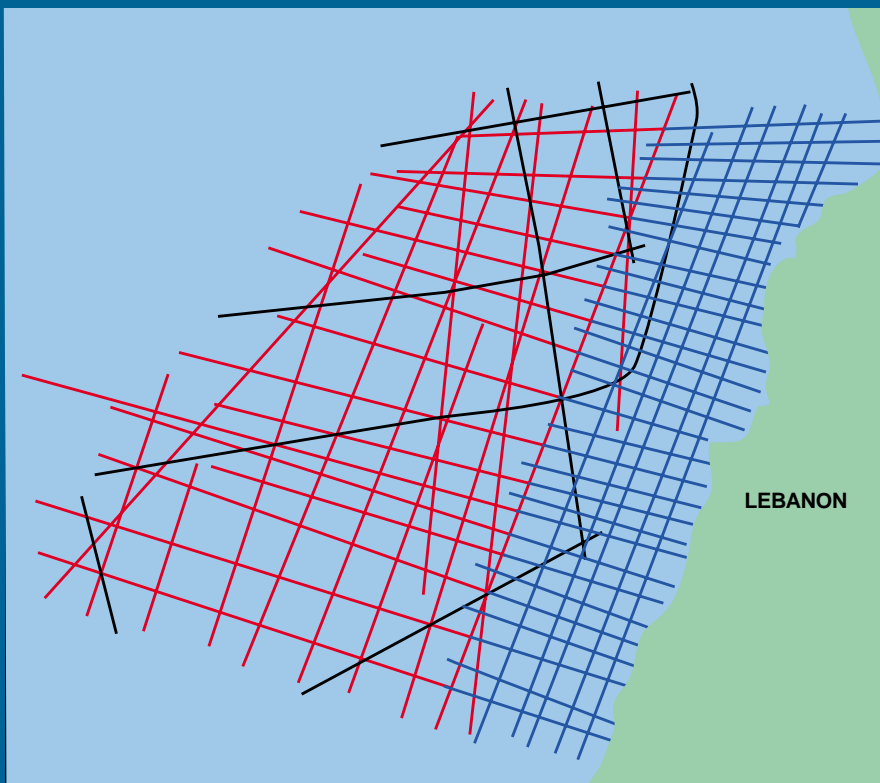


# Offshore Lebanon

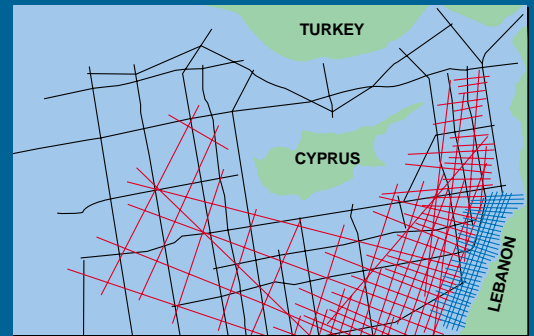
'The definitive dataset' with which to evaluate this previously unexplored country, in preparation for Lebanon's first comprehensive offshore licensing round



PSDM Section Offshore Lebanon



Total Lebanon Seismic  
– over 5000 kms



Spectrum/Fugro East Med Data  
Library – over 22,000 kms

- 1976 Spectrum data
- 2000 Spectrum/Fugro data
- 2002 Spectrum/Fugro data (with Fugro LCT grav/mag data)



Location of surveys



For further information, contact:

**Spectrum Energy and Information Technology Limited**  
Spectrum House, 56 Goldsworth Road, Woking, Surrey GU21 6LE, UK  
Tel +44 (0)1483 730201 Fax +44 (0)1483 762620

email: nes@spectrum-eit.co.uk

