

## FUGRO-LCT

# 2-D Earth Modeling

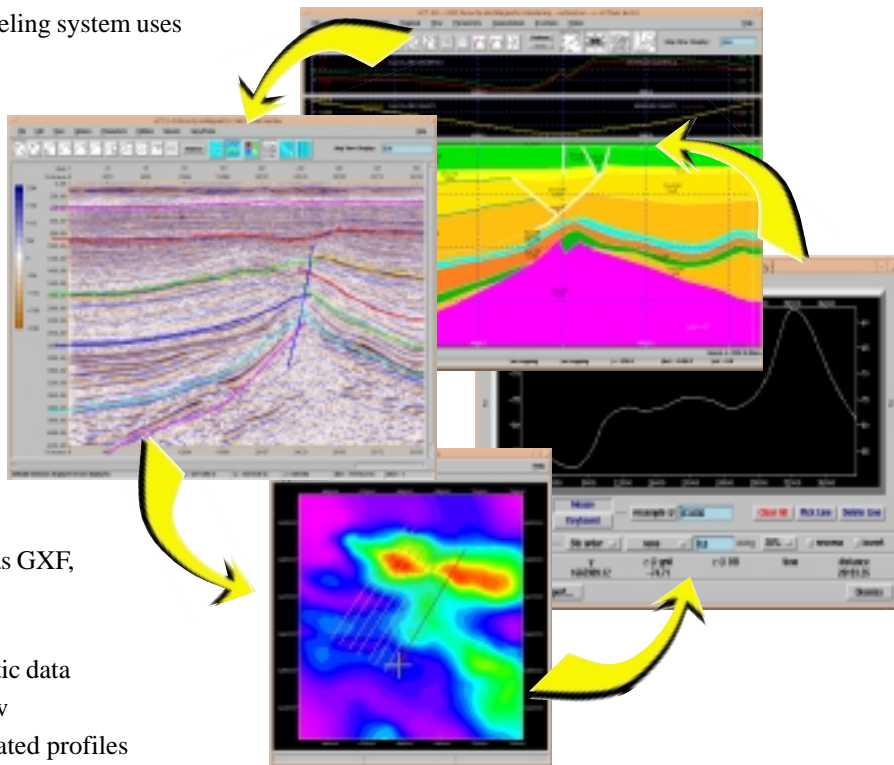
The 2-D seismic, gravity, and magnetic earth modeling system uses sophisticated computer algorithms, XWindows/Motif™ user interfaces, multiple geophysical data stores, and sharp graphic displays to aid the explorationist in creating, analyzing, and verifying integrated seismic, gravity, magnetic and geologic interpretations.

### 2-D / 2.5-D Modeling

- Landmark OpenWorks™, SeisWorks™, and Zycor™ integration
- GeoQuest IESX, CPS3, and Geoshare integration
- Tensor gradient calculations
- Easy import of a variety of grid formats, such as GXF, ERMMapper™ and USGS grids
- Optimized for dual head workstations
- Built in map view for observed gravity/magnetic data
- Dynamic linking of cross section and map view
- Mistie Statistics between observed and calculated profiles
- Customizable rock properties database
- Computation of the IGRF magnetic field parameters
- Ability to quickly extract profiles from a map to represent observed profiles for 2-D modeling
- Simultaneous views of depth and time models with real time time/depth conversion

### Model Construction

- Automatic generation of polygon model from seismic horizons
- Ability to input seismic models from Landmark and Geoquest
  - seismic cross section
  - selected horizons/faults from Landmark SeisWorks 2-D and 3-D projects
  - Landmark ASCII horizon files
  - GeoQuest IESX horizons
  - OpenWorks well files
- Seismic plot display
- Seismic plot color map
- SEG-Y import capability



- Dynamic link of time or depth model with cross section
- Rock database tables (customizable)
- Dynamic linking of seismic and map view
- HTML documentation viewable through web browser

### Features include:

- Simultaneous display and edit of a cross-sectional earth model in time and depth, with dynamic linking of two screens containing seismic and potential fields data
- Real-time calculation and display of gravity and magnetic fields based on Talwani 2-D and 2.5-D polygonal bodies
- Computation of potential fields along topography
- Numerous filter and display options for seismic and potential field data
- Scaled CGM and Postscript output capability
- Supports SEG-Y and other seismic data formats

Pricing and demonstrations are available upon request.

**FUGRO-LCT INC.**  
6100 Hillcroft  
Houston, Texas 77081, U.S.A.  
Tel: 713-272-5400  
Fax: 713-272-5410  
E-mail: info@lct.com

Web site: [www.lct.com](http://www.lct.com)

**FUGRO-LCT Limited**  
5 Newmarket Court  
Kingston, Milton Keynes, England MK10 0AG  
Tel: +44 (0) 1908-286100  
Fax: +44 (0) 1908-286101  
E-mail: [staff@fugro-lct.co.uk](mailto:staff@fugro-lct.co.uk)