

UNISON DATA LOGGING SYSTEM

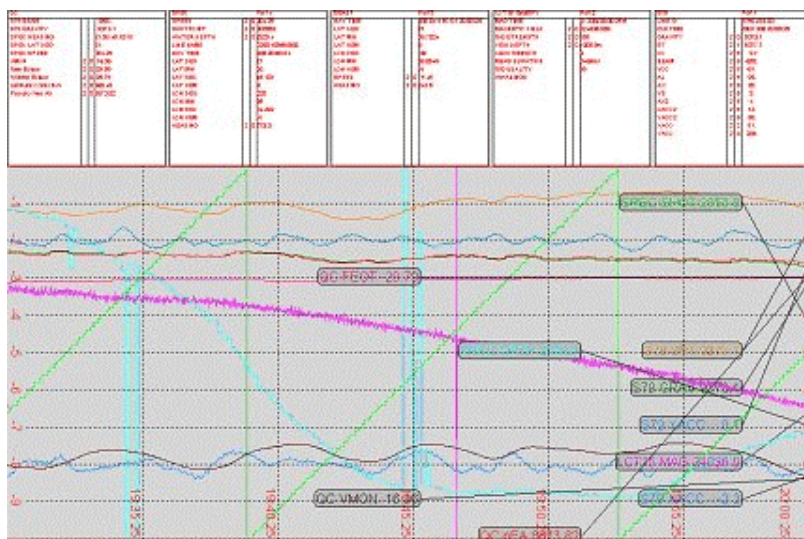
Description

UNISON uses a proprietary serial interface box that can accept up to seven serial inputs, multiplexes those inputs onto one line and transmits the data to the host computer. The data are stored on the computer hard disk drive, displayed on the screen and plotted on a printer. Data are automatically compressed and archived every hour to two removable hard disk drives.



UNISON records the data from each port as a separate data file. It also writes a user-prescribed merged data file (MDF) that merges the data from each port in use into one time-tagged file. At the start of each hour, the data files from the previous hour are closed and new files are started. The advantage of the MDF file is that although each individual component has its own time stamp that may drift, navigation time is also recorded and the time offsets may readily be observed and taken into account.

An example of the Unison data logger screen display is shown on the right.



FUGRO-LCT INC.
 6100 Hillcroft, 5th Floor (77081)
 P.O. Box 740010
 Houston, TX 77274
 Tel: (713) 369-6100 • Fax: (713) 369-6110
 E-mail: info@lct.com

FUGRO-LCT LTD.
 5 Newmarket Court
 Kingston, Milton Keynes, MK10 0AG
 U.K.
 Tel: +44-(0)1908-286100 • Fax: +44(0)1908-286101
 E-mail: info@fugro-lct.co.uk