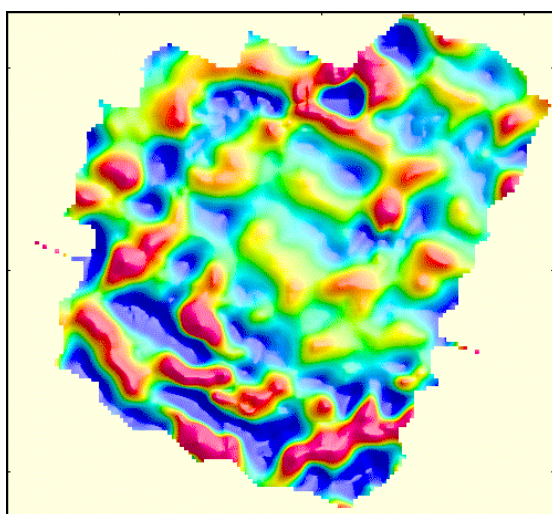
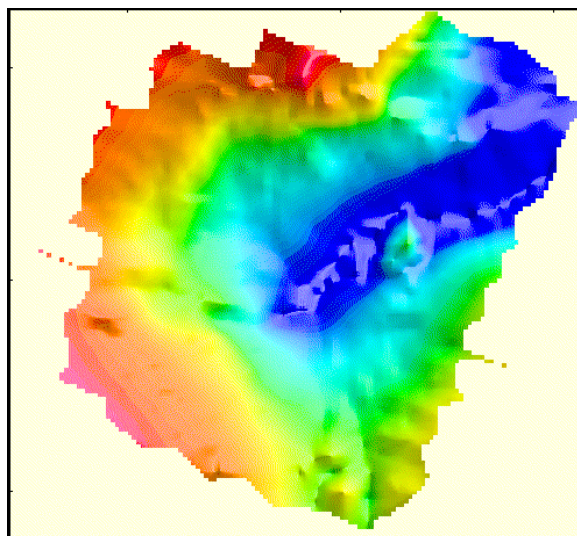


FAST-TRACK DATA PROCESSING

In response to industry demand, Fugro-LCT undertake a fast track processing service, whereby preliminary grids will be produced and emailed to the client within two weeks of completion of the data acquisition phase. This service is offered on the understanding that the award of data processing is made with data acquisition and final processed navigation data is available throughout the survey.

Preliminary gravity grids will be accurate to 1 mGal or better and those for magnetic data accurate to at least 5nT. They are designed to provide interpreters with working products at an early stage which can be integrated with the seismic results produced on the survey vessel.



Data is processed with standard default parameters and without the benefit of Fugro-LCT's sophisticated 3D levelling procedures. Even so, the data resolution obtained is sufficient to identify the presence and extent of such features as salt domes or walls, volcanic bodies, basement highs and the extent of sedimentary basins.

This enables the interpreter to constrain the seismic interpretation from the start, rather than try to integrate the gravity and magnetic results several weeks into a project, when a number of key decisions may already have been made.

This fast track data processing service is included within Fugro-LCT's basic processing rates.

FUGRO-LCT INC.
6100 Hillcroft, 5th Floor (77081)
P.O. Box 740010
Houston, TX 77274
Tel: (713) 369-6100 • Fax: (713) 369-6110
E-mail: info@lct.com

FUGRO-LCT LTD.
5 Newmarket Court
Kingston, Milton Keynes, MK10 0AG
U.K.
Tel: +44-(0)1908-286100 • Fax: +44(0)1908-286101
E-mail: info@fugro-lct.co.uk